

International Journal of Innovative Research in Science, Engineering and Technology

(An ISO 3297: 2007 Certified Organization)

Website: www.ijirset.com

Vol. 6, Issue 9, September 2017

Reliability Analysis of Frames

Karthik C B¹, Amit Kumar Onkar², Manjuprasad M³, Dinesh S V⁴

Post Graduate Student, Dept. of Civil Engg, Siddaganga Institute of Technology, Tumakuru, India¹

Senior Scientist, Structural Technological Division, CSIR-National Aerospace Laboratories, Bengaluru, India²

Chief Scientist, Structural Technological Division, CSIR-National Aerospace Laboratories, Bengaluru, India³

Professor and Head, Dept. of Civil Engg, Siddaganga Institute of Technology, Tumakuru, India⁴

ABSTRACT: In this paper, reliability analysis of framed structures are considered. Here, the uncertainties in geometry, loads and strength are considered with required distributions. The performance functions for bending stress, shear stress and deflection are derived from the finite element analysis. The performance functions are studied using Rackwitz-Fiessler algorithm and Hasofer-Lind reliability index is determined. A MATLAB program is developed for computing reliability index by using performance function and the statistical data.

KEYWORDS: Reliability Analysis; Rackwitz-Fiessler Algorithm; Reliability Index; Probability of failure.

I. INTRODUCTION

Structural reliability analysis plays an important role in the analysis and design of structures. The main purpose of structural reliability analysis is due to many sources of uncertainty in the structural design. This may be due to uncertainties in material parameters or mathematical modeling. The parameters of the load and load carrying capacity of the structures are not deterministic quantities. Every engineering structure must satisfy the safety and serviceability requirement under the service load over it, which means it must be reliable against collapse and serviceability, such as excessive deflection and cracking. A typical structural reliability analysis deals with models that are mathematical idealizations of the physical processes. The idealization requires the definition of basic variables describing the geometry, loads and material properties. In the present work, reliability analysis is carried out by considering two example problems namely a simply supported beam and a portal frame. Reliability analysis is performed using Hasofer-Lind Reliability Index method in conjunction with Rackwitz-Fiessler Algorithm (AFOSM method) and the results are compared with those obtained using Monte-Carlo simulations.

II. RELIABILITY ANALYSIS

A. Reliability

Reliability is the probability of a structure performing its intended function adequately for the period intended under the given operation conditions. Reliability can be taken as the probability of endurance and is equal to one minus the probability of failure ($1 - P_f$). Let the resistance of the structure be R and the load on the structure to be S . The structure is supposed to fail when R is less than S and its probability of failure is specified as

International Journal of Innovative Research in Science, Engineering and Technology

(An ISO 3297: 2007 Certified Organization)

Website: www.ijirset.com

Vol. 6, Issue 9, September 2017

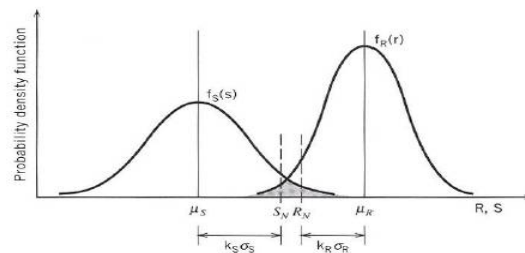


Fig 1. PDF of R and S_[1]

$$\mu_Z = \mu_R - \mu_S \quad (1)$$

$$\sigma_Z^2 = \sigma_R^2 + \sigma_S^2 \quad (2)$$

$$\beta = \mu_Z / \sigma_Z \quad (3)$$

B. Hasofer-Lind Reliability Index

Hasofer and Lind proposed a new approach which linearizes the LSF about a point which lies on the failure surface and corresponds to the maximum likelihood of failure occurrences. In this method the reliability is measured through the Hasofer-Lind safety index, which is defined as the minimum distance from the origin to the failure surface in the reduced (standard normal) co-ordinate system. The limitation of this method is that it is applicable only when the random variables are normal.

C. Hasofer-Lind Reliability Index and Rackwitz-Fiessler method

Rackwitz and Fiessler extended the Hasofer and Lind approach to include the distribution information of the random variables. Compared to other optimization algorithms, this algorithm requires the least amount of storage and a lower number of computations. For most situations this method not only converges, but also converges faster. However, under certain conditions the method may fail to converge and when the limit state function is highly complex and non-linear, it may converge slowly or even result in divergence. The algorithm is as follows

1. Formulate the limit state function. Determine the probability distributions and appropriate parameters for all random variables X_i ($i=1, 2, \dots, n$) involved.
2. Obtain an initial design point $\{x_i^*\}$ by assuming values for $n-1$ of the random variables X_i . (Mean values are often a reasonable choice.) solve the limit state function $g=0$ for the remaining random variable. This ensures that the design point is on the failure boundary.
3. For each of the design point values x_i^* corresponding to a non-normal distribution, determine the equivalent normal mean $\mu_{X_i}^C$ and standard deviation $\sigma_{X_i}^C$ using the below equations

$$\begin{aligned} \mu_{X_i}^C &= x_i^* - \sigma_{X_i}^C [\varphi^{-1}(F_X(x_i^*))] \\ \sigma_{X_i}^C &= \frac{1}{f_X(x_i^*)} \varphi[\varphi^{-1}(F_X(x_i^*))] \end{aligned} \quad (4)$$

4. Determine the reduced variables $\{z_i^*\}$ corresponding to the design point.

$$z_i^* = \frac{x_i^* - \mu_{X_i}^C}{\sigma_{X_i}^C} \quad (5)$$

5. Determine the partial derivatives of the limit state function which respect to the reduced variables. For convenience define the column vector $\{G\}$ as the vector whose elements are these partial derivatives multiplied by -1; i.e.,

International Journal of Innovative Research in Science, Engineering and Technology

(An ISO 3297: 2007 Certified Organization)

Website: www.ijirset.com

Vol. 6, Issue 9, September 2017

$$\{G\} = \begin{bmatrix} G_1 \\ G_2 \\ \vdots \\ G_n \end{bmatrix}, \text{ where } G_i = -\frac{\partial g}{\partial z_i} \quad (6)$$

6. Calculate an estimate of β using the following formula.

$$\beta = \frac{\{G\}^T \{z^*\}}{\sqrt{\{G\}^T \{G\}}}, \text{ where } \{z^*\} = \begin{bmatrix} z_1^* \\ z_2^* \\ \vdots \\ z_n^* \end{bmatrix} \quad (7)$$

7. Calculate a column vector containing the sensitivity factors using

$$\alpha = \frac{\{G\}}{\sqrt{\{G\}^T \{G\}}}$$

8. Determine a new design point in reduced variables for n-1 of the variables using

$$z_i^* = \alpha_i \beta \quad (8)$$

9. Determine the corresponding design point values in original coordinates for the n-1 values in step 7 using

$$x_i^* = \mu_{x_i}^C + z_i^* \sigma_{x_i}^C \quad (9)$$

10. Determine the value of the remaining random variables (i.e., the one not found in step 8 and 9) by solving the limit state function $g=0$.

11. Repeat step 3-10 until β and the design point $\{x_i^*\}$ converge.

III. PERFORMANCE FUNCTION

A. Assumptions

To define the limit state function, the following assumptions are made

1. Applied load to structure consists of live and dead load.
2. Applied steel is st₃₇.
3. Failure probability is investigated in elastic region.
4. Structure with compact section is I-shape.

B. Model for analysis

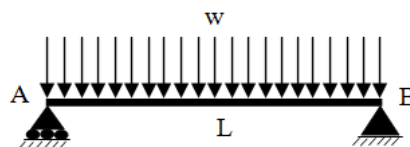


Fig 2. Beam Model

International Journal of Innovative Research in Science, Engineering and Technology

(An ISO 3297: 2007 Certified Organization)

Website: www.ijirset.com

Vol. 6, Issue 9, September 2017

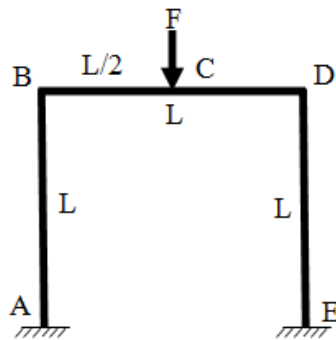


Fig3. Frame Model

C. Performance function for beam

1. For bending stress mode

$$g(M) = F_y - \frac{wL^2}{8.S_x} \quad (10)$$

F_y : Yield stress, L : Length of the member, w : Load, S_x : Section Modulus

2. For shear stress mode

$$g(v) = \frac{F_y}{\sqrt{3}} - \frac{wL}{2ht_w} \quad (11)$$

h : Height of the beam, t_w : Thickness of the web

3. For deflection mode

$$g(v) = \frac{L}{240} - \frac{5wL^4}{384EI} \quad (12)$$

E : Modulus of Elasticity,

D. Performance function for frame.

From fig 3, the structure and the loading conditions are symmetrical hence limit state equation for element AB is same for element DE and limit state equation for element BC is same for element CD.

1. For bending stress mode

For element AB

$$g(M) = F_y - \frac{FL(3I+2AL^2)}{24(3I+AL^2)S_x} \quad (13)$$

For element BC

$$g(M) = F_y - \frac{FL(15I+4AL^2)}{24(3I+AL^2)S_x} \quad (14)$$

2. For shear stress mode

For element AB

$$g(v) = \frac{F_y}{\sqrt{3}} - \frac{FAL^2}{8(3EI+AL^2)ht_w} \quad (15)$$

For element BC

$$g(v) = \frac{F_y}{\sqrt{3}} - \frac{F}{2ht_w} \quad (16)$$

3. For Deflection mode

For element AB

$$g(v) = \frac{L}{240} - \frac{FL^3(3I-(1/3)AL^2)}{108(3EI+AL^2)EI} \quad (17)$$

For element BC

$$g(v) = \frac{L}{240} - \frac{FL(105AIL^2+288I^2+2A^2L^4)}{192(3I+AL^2)AEI} \quad (18)$$

International Journal of Innovative Research in Science, Engineering and Technology

(An ISO 3297: 2007 Certified Organization)

Website: www.ijirset.com

Vol. 6, Issue 9, September 2017

IV. RELIABILITY ANALYSIS.

The reliability analysis is carried out based on the random variables shown in table below.

Table 1 Statistical data of variables.

Variable	Unit	PDF	Mean	COV
W	kg/cm	Gumble	20	0.12
L	cm	Log-Normal	550	0.07
S _x	cm ³	Log-Normal	904	0.05
E	kg/cm ²	Gumble	2.03*10 ⁶	0.1
f _y	kg/cm ²	Log-Normal	2400	0.1
I _x	cm ⁴	Gumble	16270	0.05
h	cm	Log-Normal	36	0.05
t _w	cm	Normal	0.8	0.05
A	cm ²	Deterministic	33.11	

A. Reliability Analysis of beam

In the below table the reliability indices of beam under various failure modes are shown.

Table 2 Failure probability of beam using AFOSM method

Failure Mode	Reliability Index	Failure Probability
Bending Stress	4.86	2.89*10 ⁻⁶
Displacement	4.58	1.11*10 ⁻⁵
Shear Stress	8.29	4.49*10 ⁻¹⁶

Table 3 Failure probability of beam using MCS

Failure Mode	Reliability Index	Failure Probability
Bending Stress	4.95	3.37*10 ⁻⁷
Displacement	5.21	9.44*10 ⁻⁸
Shear Stress	8.40	2.23*10 ⁻¹⁷

Reliability analysis of beam is also performed for different magnitudes of load under different failure modes using AFOSM method and shown in Tables 4 -6.

International Journal of Innovative Research in Science, Engineering and Technology

(An ISO 3297: 2007 Certified Organization)

Website: www.ijirset.com

Vol. 6, Issue 9, September 2017

Table 4 Bending Stress failure mode

W	β	Pf	Direction Cosines			
			α_{Sx}	α_L	α_w	α_{Fy}
20	4.86	2.89×10^{-6}	-0.24	0.53	0.44	-0.67
25	3.83	0.0002	-0.24	0.57	0.47	-0.62
30	2.96	0.0049	-0.24	0.59	0.49	-0.57
35	2.22	0.0334	-0.24	0.61	0.51	-0.54
40	1.58	0.1129	-0.24	0.62	0.52	-0.52
45	1.03	0.2345	-0.23	0.63	0.54	-0.49
50	0.53	0.3455	-0.23	0.63	0.55	-0.48

Table 5 Shear Stress failure mode

W	B	Pf	Direction Cosines				
			α_h	α_{tw}	α_w	α_{Fy}	α_L
20	8.29	4.49×10^{-16}	-0.09	-0.09	0.19	0.12	-0.96
25	7.81	2.22×10^{-14}	-0.13	-0.12	0.24	0.15	-0.93
30	7.31	9.66×10^{-13}	-0.16	-0.99	0.29	0.19	-0.90
35	6.81	3.33×10^{-11}	-0.18	-0.18	0.33	0.22	-0.87
40	6.31	8.56×10^{-10}	-0.20	-0.20	0.37	0.24	-0.84
45	5.83	1.58×10^{-8}	-0.22	-0.22	0.40	0.26	-0.81
50	5.37	2.10×10^{-7}	-0.24	-0.24	0.43	0.28	-0.78

Table 6 Deflection Mode of Failure

W	B	Pf	Direction Cosines			
			α_I	α_E	α_w	α_L
20	4.58	1.11×10^{-5}	-0.21	-0.56	0.40	0.68
25	3.69	4.40×10^{-4}	-0.21	-0.51	0.41	0.71
30	2.95	0.005	-0.21	-0.48	0.42	0.73
35	2.34	0.025	-0.21	-0.46	0.43	0.74
40	1.81	0.077	-0.20	-0.44	0.43	0.75
45	1.35	0.159	-0.20	-0.42	0.44	0.76
50	0.94	0.254	-0.20	-0.41	0.44	0.76

B. Reliability Analysis of Frame

The reliability indices of frame element AB under various failure modes are given in Tables 7 and 8.

Table 7 Failure Probability for element AB using AFOSM method

Failure Mode	Reliability Index	Failure Probability
Bending Stress	7.08	7.20×10^{-13}
Displacement	8.93	2.13×10^{-19}
Shear Stress	9.59	4.40×10^{-22}

International Journal of Innovative Research in Science, Engineering and Technology

(An ISO 3297: 2007 Certified Organization)

Website: www.ijirset.com

Vol. 6, Issue 9, September 2017

Table 8 Failure Probability for element AB using MCS

Failure Mode	Reliability Index	Failure Probability
Bending Stress	7.17	3.74×10^{-13}
Displacement	8.97	1.48×10^{-19}
Shear Stress	9.61	3.62×10^{-22}

Similarly, reliability indices of frame element BC under various failure modes are given in Tables 9 and 10

Table 9 Failure Probability for element BC using AFOSM method

Failure Mode	Reliability Index	Failure Probability
Bending Stress	4.17	1.5×10^{-5}
Displacement	6.50	4.01×10^{-11}
Shear Stress	8.36	3.13×10^{-17}

Table 10 Failure Probability for element BC using MCS

Failure Mode	Reliability Index	Failure Probability
Bending Stress	4.22	1.22×10^{-5}
Displacement	6.58	2.35×10^{-11}
Shear Stress	8.41	2.05×10^{-17}

V. RESULTS

Based on statistical features of random variables, failure probability for specified modes of beam is summarized as follows. Results of failure probability for assumed beam is negligible. According to Table 2, the highest failure probability corresponds to displacement and the lowest failure probability is achieved in shearing stress. In Tables 4-6, the probability of beam for the failure modes are compared. As shown in the table, the failure probability of displacement is more than bending stress for load less than 30 kg/cm. However, for load more than 30 kg/cm failure mode in bending stress is more critical. For the frame considered, the element AB is safer than the element BC. This is because load is directly acting on the member BC. Both elements are safer for shear compared to bending and deflection.

REFERENCES

1. Achintya Haldar, Shankar Mahadevan, "Probability, Reliability and Statistical Methods in Engineering Design", Jhon Wiley & Sons, Inc. New York.
2. André T. Beck and André S. D, "Reliability Analysis of I-Section Steel Columns Designed According to New Brazilian Building Codes", Journal of Brazilian society of mechanical science and engineering vol.xxx no.2, Brazil 2008, pp.152-159.
3. Bhatnagar S.D, Sehgal V.K & Krishan Gopa, "Computational Technique for Reliability Analysis and Design of Steel Beam", International Journal of Information Technology and Knowledge Management vol.2, India, 2010, pp.511-513.
4. Fiessler. B, Neumann, H.J., and Rackwitz, R. "Quadratic Limit States in Structural Reliability". Journal of Engineering Mechanics, ASCE, Vol. 1095. No. 4, pp.. 661-676, 1979.
5. Hamed Abshari, M. Reza Emami Azadi and Madjid Sadegh Azar, "Reliability Analysis of Steel Structures under Buckling Load in Second-order Theory", Advances in Research 2(12), Iran, 2014, pp.950-966.
6. Manjunath G.S, Dr. K Manjunath, Sandeep Kumar D.S, "Probability Failure of Steel Structure", International Research Journal of Engineering and Technology vol.2, India, 2012, pp.569-672.
7. Mohammad Masoud Azhdari Moghaddam & Medi Moudi, "Analysis of Beam Failure Based on Reliability System Theory Using Monte Carlo Simulation Method" International Conference on Applied Computer Science, Iran, pp.516-519.
8. Omishore A & Kala Z, "Reliability Analysis of Steel Structures with Imperfections", NSCC, Czech Republic, 2009, pp.277-298.
9. Rosenbleuth, E., and Esteva, L. "Reliability Bases for Some Mexican Codes" ACI Publication SP-31, pp.1-41, 1972.
10. Satyanarayana M.V.R., Yesuratnam G, Ravindra V, " Study of performance evolution of reliability of truss girder railway bridge by Hasofer-Lind method", International journal of advanced scientific and technical research vol.7, India, 2015, pp.101-114.